



MODARC
smart home

Address :

AS SOL OCH BYGG AB 559424 3353 Smörbolsgatan 1b 41718 Göteborg

Phone Number :

(+46) 736862356

Email :

assolochbygg@gmail.com

Catalog

COMPANYPROFILE



Modarc Smart Home is a high-tech enterprise specialising in the research, development, production and sales of nettle ships, special houses and container houses.

Over the past ten years, we have provided OEM services for many international brands in the field of residential construction. Today, Modarc Smart Home has the most complete light steel house product series and container product series, including light steel villa, light steel air bnb, light steel commercial building, light steel petrol station, space capsule, apple capsule, house-boat, container house, container office, container restaurant and so on. Our factory covers an area of 30,000 square metres. The products are exported to all over the world.

All the products of Modarc Smart Home have got ISO certificate. Each product is quality verified before delivery. Detailed inspection is carried out before delivery. Make sure the structure and appearance are intact. We will make sure that the products are not damaged during transport. We have established many well-known cases in Australia, the United States, the Philippines, Israel, Nigeria and Japan. With an annual output of 50 million, we are technically mature and price competitive.

BRAND

INTRODUCTION



Lasting quality

Professional products. Quality is guaranteed. Serve with care.

◆ Independent research and development team

Modarc Smart Home is committed to scientific and technological innovation, has a top design team and manufacturing plant, the use of industry advanced energy saving, building structure technology, invested in the research and development of "Apple cabin" products, to create a variety of conditions to meet the living conditions of comfortable hotel products, for people to bring more travel and lifestyle possibilities.

◆ High efficiency, high quality and cost-effective

No foundation, applicable to all terrain, no damage to the ecological environment, no building waste, ecological environmental protection. In the factory, 40 days of production, assembly and disassembly, integrated transportation, 2 hours of on-site installation, no need for secondary decoration, shorten the construction cycle, equipped with fully intelligent home appliance control system, panoramic vision, own flow.

◆ Product quality and service are guaranteed

The main structure of the product is special steel structure. The design stability of the structure is strong, and the wind resistance is strengthened. The main material is made of high strength composite material and galvanized sheet, which has high safety and strong protection. By professional soft decoration designers to create space design scheme for custom professional planning team according to the actual situation of the project and customer requirements, planning and design, including consulting, overall planning, space design, supporting facilities. Construction drawing, etc.

MA-E7



Size: 11500*3200*3200mm Construction area: 36.8 m²
The number of people: 4-6

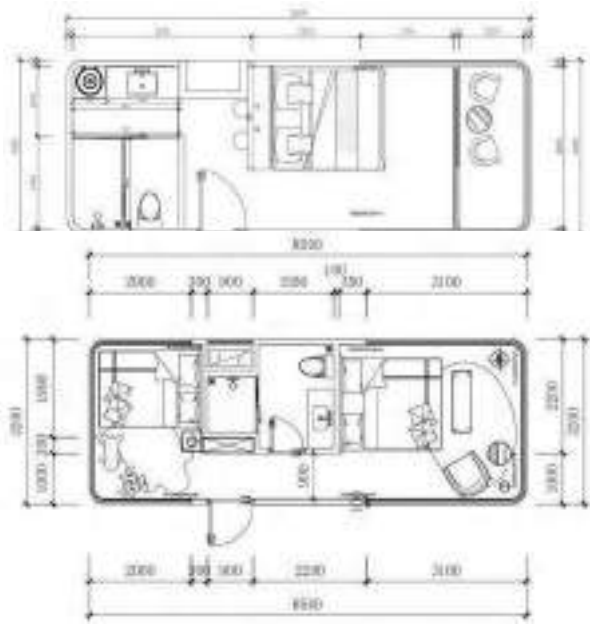


1bedroom+1balcony



2bedroom+1balcony

MA-E5



◆ Size: 8500*3200*3200mm Constuction area: 27.2 m² The number of people: 3-4
Room type : 2bedroom/1bedroom+1balcony

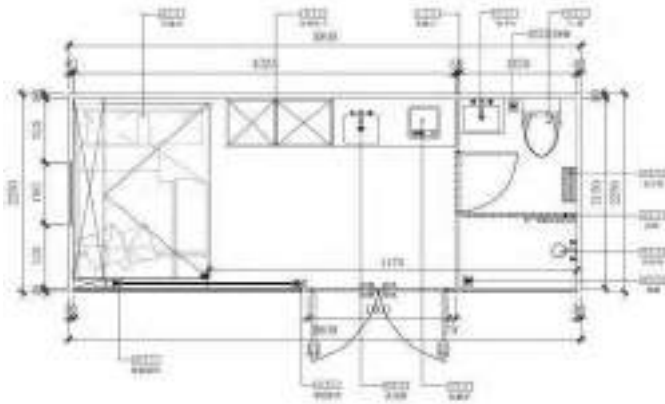


MA PB-01

Glass steel applecabin

Available in three different sizes. Can be selected according to their own needs.

Size: 8500*2250*2450mm



Construction area: 19m² The number of people: 2-4

Size: 5800*2250*2450mm

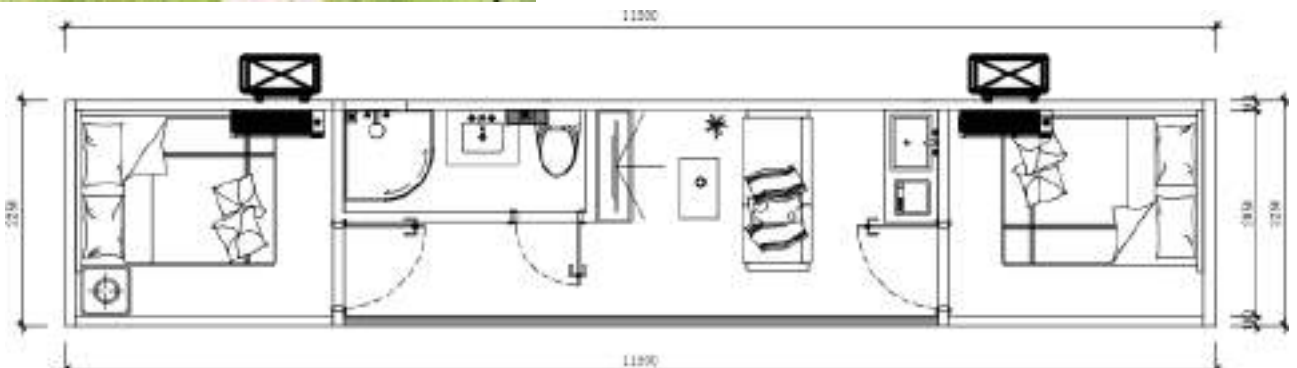
Construction area: 13m² The number of people: 1-2



MA-PB01

Size: 11500*2250*2450mm

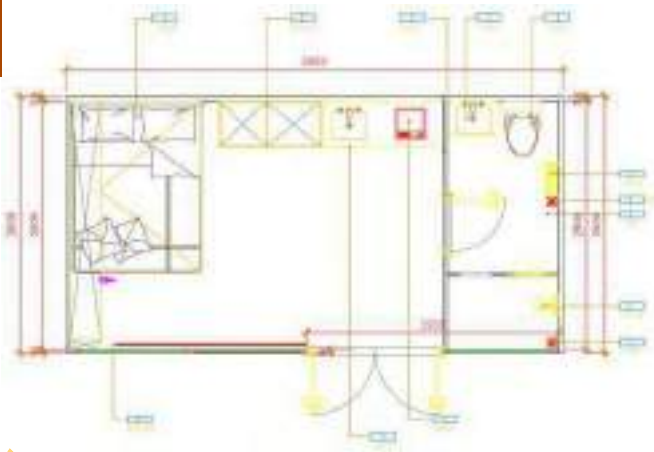
Construction area: 25.8m² The number of people: 4-6



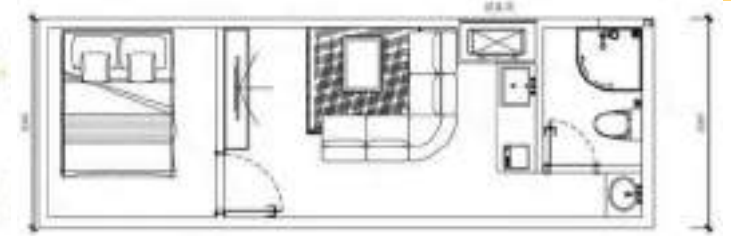


MA PB-02

Glass steel applecabin



Construction area: 19m² The number of people: 2-4



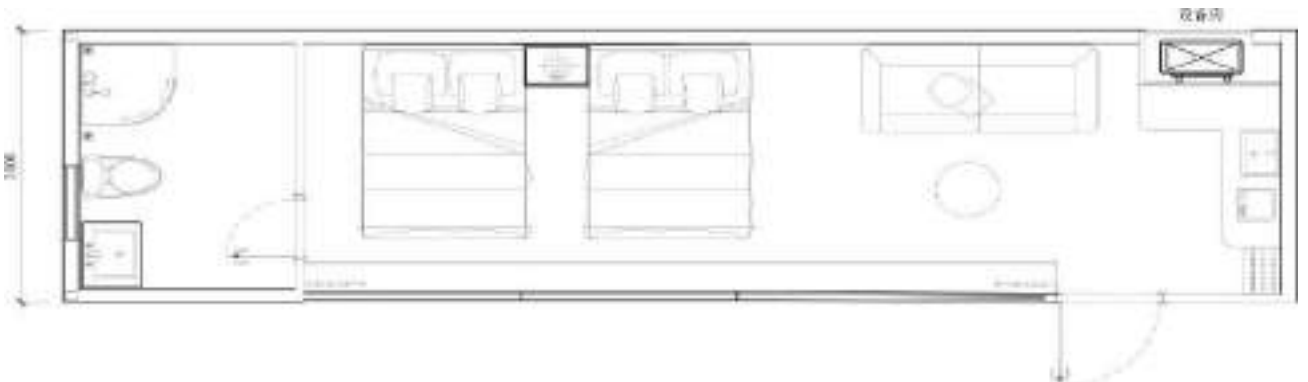
Construction area: 25.5m² The number of people: 4-6

Size: 5800*3000*3200mm

Size: 8500*3000*3200mm

OPTIONAL SIZE

Size: 11500*3000*3200mm
Construction area: 26.5m²
The number of people: 4-6

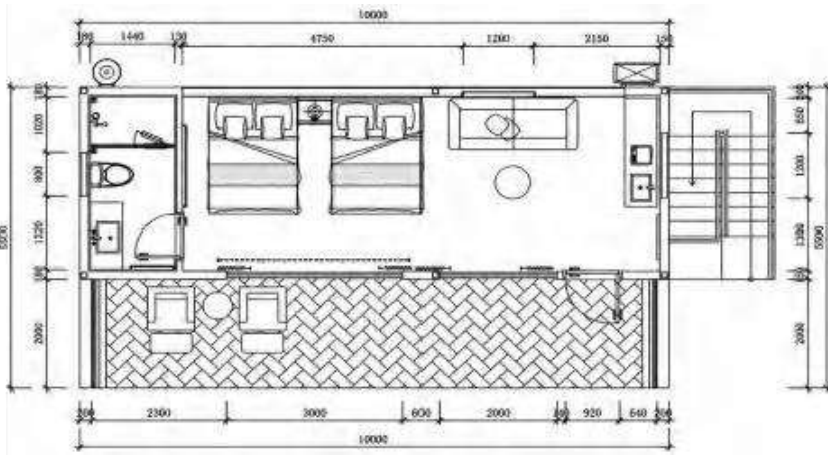


MA

-

PB03

Glass steel apple cabin



OPTIONAL SIZE

- ◆ Size: 10000*3500*3200mm
- Construction area: 35m²
- The number of people: 4-8

MA-PB05

Glass steel apple cabin

Size: 11500*3000*3000mm ◆

Construction area: 34.5m²

The number of people: 4-6





MA PB-06

Glass steel apple cabin

◆ Cabin Size: 5800*4500*2450mm Fence Size: 5800*2250*2450mm
Building area: 26m² The number of people: 4-6

OPTIONAL

MA-PB08

Glass steel apple cabin

SIZE



◆ Size: 12000*4000*3000mm Constuction area: 48m² The number of people: 6-8

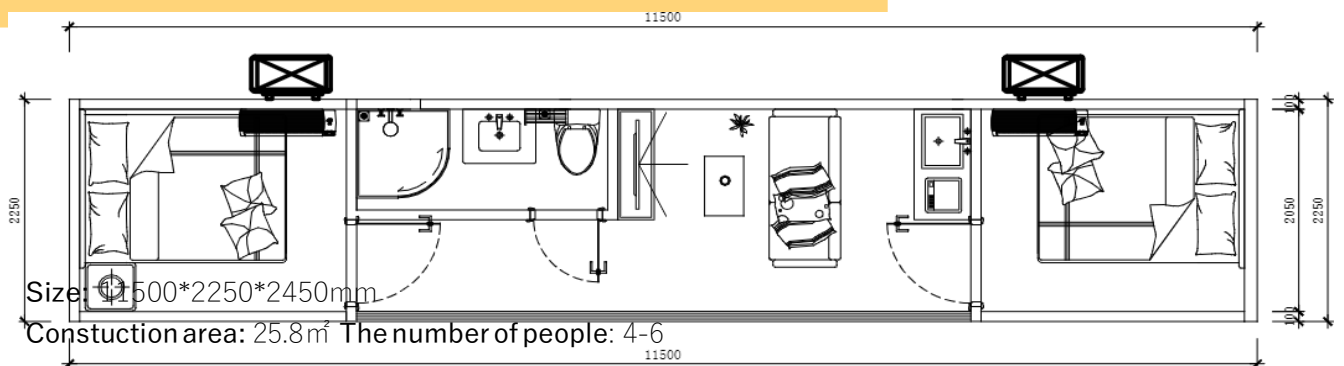


MA
0

Glass steel applecabin



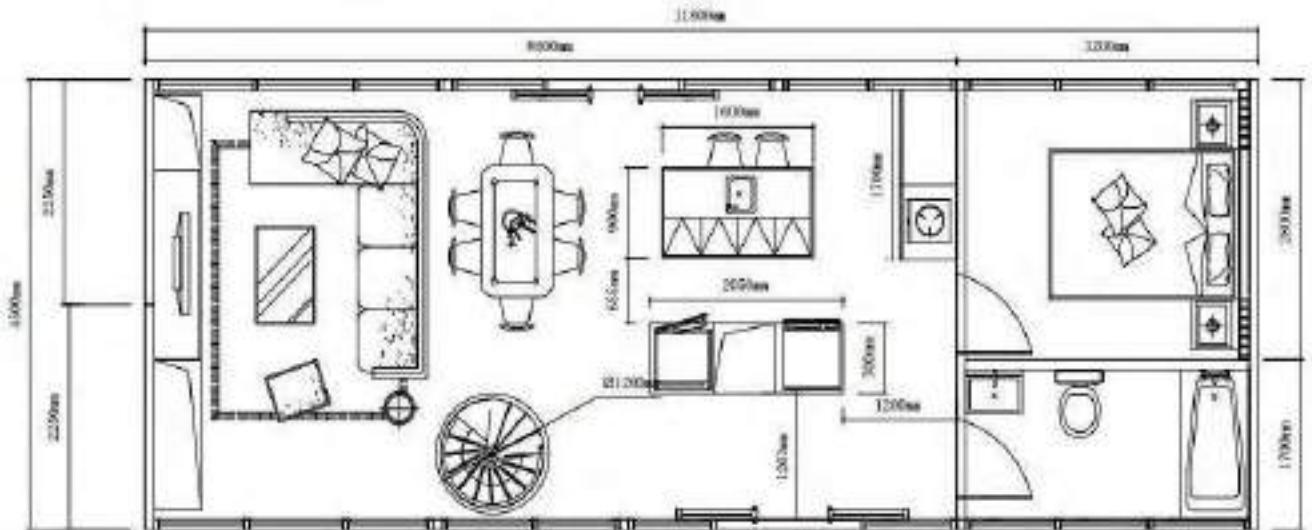
OPTIONAL SIZE





MA-DB01

OPTIONAL SIZE



Second floor

Size: 11500*2250*2450mm pavilion

Building area: 25.9m²

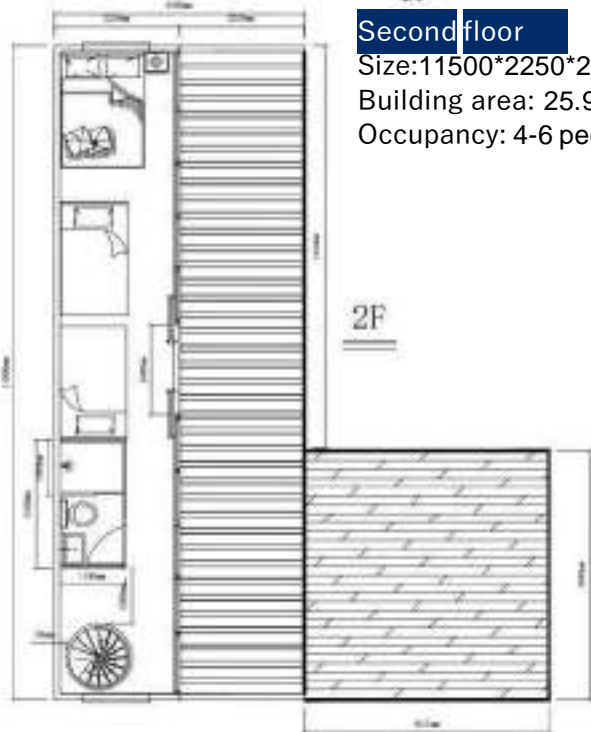
Occupancy: 4-6 people

Ground floor

size: 11500*4500*2450mm

Building area: 51.8m²

Occupancy: 4-6 people



MA-DB02



OPTIONAL SIZE

Ground floor

size: 5800*2250*2450mm
Building area: 13m²
Occupancy: 2-4 people

Second floor

size: 5800*2250*2450mm
Building area: 13m²
Occupancy: 2-4 people

MA-DB03



Ground floor

size: 11500*2250*2450mm

Building area: 134.5m²

Occupancy----- 8-16people

The four hulls are spliced into two layers

OPTIONAL
SIZE



MA-DB04

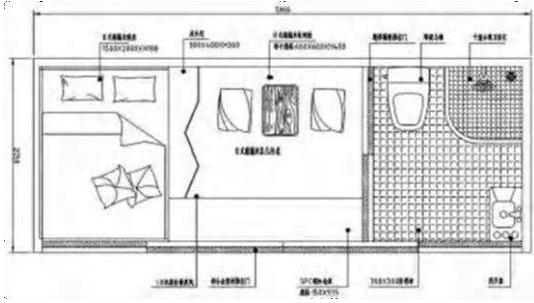


OPTIONAL SIZE

Second floor
size: 5800*2500*2450mm
Building area: 13m²
Occupancy: 2-4 people



Ground floor
size: 5800*2500*2450mm
Building area: 13m²
Occupancy: 2-4 people



Size: 5800*2250*2450mm Constuction area: 13m² ◆
 The number of people: 1-2



MA-TB01



◆ Size: 2250*2250*2250mm
 Constuction area: 5m²
 The number of people: 1-2

MA-MB01

Size: 3500*2250*2450mm ◆
 Constuction area: 7.9m²
 The number of people: 2-4

MA-MB02



PROJECT CASE



CONGHUA PROJECT



PROJECT CASE



MODE OF TRANSPORT

FOREIGN MODE OF TRANSPORT

After the external packaging of the product is finished, it is transported in the container. Products from the factory to the site of the camp during the journey, will adopt strict safety protection measures to ensure safety and stability in transportation.



PRODUCT

APPLICATION SCENARIOS



PLANT AND PRODUCTION



National color production base



National color production base



The total area of Guangdong factory is about 30,000 square meters, more than 200 production personnel, the monthly delivery can reach 100 units. The core production team are all founders. Adhering to the production and management philosophy of providing customers with the best, highest quality, most ideal and most up-to-date products, each production and delivery process of products is strictly controlled, so as to achieve the best product quality and landing effect.



MODARC

smart home

Adress :

AS SOL OCH BYGG AB 559424 3353 Smörbolsgatan 1b 41718 Göteborg

Phone Number :

(+46) 736862356

Email :

assolochbygg@gmail.com